

DIARY OF EVENTS

2008 Walks at the Reserves

FRIDAY 18 APRIL

Magdalen Hill Down: Spring Walk

A good time to see early butterflies, spectacular cowslips and other spring flowers. Parents and children most welcome. Approx. 2 hours. **Leader:** Lynn Fomison (01962) 772251.

Meet: 10.30am in gravel car park opposite Magdalen Hill cemetery on the B3404 Alresford Rd at Winchester (SU 512 295).

SUNDAY 4 MAY

Magdalen Hill Down: Monthly Meander

Leader: Lynn Fomison (01962) 772251. **Meet:** 10.30am in gravel car park opposite Magdalen Hill cemetery on the B3404 Alresford Rd, Winchester (SU 512 295). Approx 2 hours.

TUESDAY 6 MAY

Bentley Station Meadow: Walk To Health (W2H)

The Alton Walk2Health group is visiting BSM on the first Tuesday of each month up to and including 7 October. Come and enjoy a leisurely stroll interspersed with looking at nature.

Leader: Lynn Fomison (01962) 772251. **Meet** 10.45am in the NE corner of the car park at Bentley station (SU 792 432) or park in Station Road.

MONDAY 26 MAY

Bentley Station Meadow: Spring Saunter

A leisurely walk for approx 2 hours, with kissing gates but no stiles. Some wet areas.

Children most welcome. **Leader:** Lynn Fomison (01962) 772251. **Meet:** 10:30am in car park at Bentley Station (SU 792 432).

SUNDAY 1 JUNE

Magdalen Hill Down: Monthly Meander

As 4 May.

TUESDAY 3 JUNE

Bentley Station Meadow: Walk To Health

As 6 May (Health Walk leader not Lynn).

TUESDAY 3 JUNE

Yew Hill: Evening Walk

A good time of year to see orchids and the butterfly habitat. **Leader:** Colin Matthews.

Meet: 7.15pm at end of Old Kennels Lane at junction with Port Lane and Millers Lane, Oliver's Battery (SU 451 269).

TUESDAY 1 JULY

Bentley Station Meadow: Walk To Health

As 6 May.

SUNDAY 6 JULY

Magdalen Hill Down: Monthly Meander

As 4 May.

SATURDAY 12 JULY

Bentley Station Meadow (Joint meeting with HWT)

Following the walk there will be an opportunity for a lunchtime picnic in the Goose Green area of Alice Holt Forest to try to see Purple Emperors. If you would like to join this, please bring a packed lunch. **Leaders:** Lynn Fomison (01962) 772251 and Mary Parker. **Meet:** 10:30am in the car park at Bentley Station (SU 792 432).

19 to 27 July:

Save our Butterflies Week.

See www.hantsiow-butterflies for more local events or www.butterfly-conservation.org for national events.

SATURDAY 19 JULY **Bentley Station Meadow: A Joint 40th Celebration**

This is an event for BC members and friends and volunteers from Rowhill Nature Reserve Society. Both organisations are celebrating an important anniversary. It is also the start of National Save our Butterflies Week. We will have a walk around the reserve and in particular look at the habitat for Purple Emperors. If you wish to stay for a lunchtime picnic please bring a packed lunch. **Leader:** Lynn Fomison (01962) 772251. **Meet:** 10.30am in the car park at Bentley Station (SU 792 432).

WEDNESDAY 23 JULY **Yew Hill**

A gentle stroll for approx. 2 hours at one of the best times of year to see butterflies. This event marks National Save our Butterflies Week. **Leader:** Ivan Arnold (01962) 866706. **Meet:** 10.30am (see 3 June for directions).

SUNDAY 27 JULY **Magdalen Hill Down: Meet the Butterflies**

A walk of approx. 2 hours at one of the best times of year to see Chalkhill Blue butterflies. This event marks the end of National Save our Butterflies Week and the start of 4 weeks of special walks each Wednesday and Sunday to complement the Butterfly Summer Art Exhibition at Winchester Discovery Centre. **Leader:** Lynn Fomison (01962) 772251. **Meet:** 10.30am in the car park opposite Magdalen Hill cemetery on B3404 Alresford Rd at SU 512 295.

WEDNESDAY 30 JULY **Magdalen Hill Down: Meet the Butterflies**

As 27th July.

SUNDAY 3 AUGUST **Magdalen Hill Down: Monthly Meander**

As 4 May.

TUESDAY 5 AUGUST **Bentley Station Meadow: Walk To Health**

As 6 May.

WEDNESDAY 6 AUGUST **Magdalen Hill Down: Meet the Butterflies**

As 27th July.

SUNDAY 10 AUGUST **Magdalen Hill Down: Meet the Butterflies**

As 27th July.

WEDNESDAY 13 AUGUST **Magdalen Hill Down: Meet the Butterflies**

As 27th July.

THURSDAY 14 AUGUST **Bentley Station Meadow**

A walk of approx. 2 hours to see summer flowers and butterflies. Children and parents most welcome. **Leader:** Lynn Fomison. **Meet:** 10.30am in car park at Bentley Station (SU 792 432).

SUNDAY 17 AUGUST **Magdalen Hill Down: Meet the Butterflies**

As 27 July

WEDNESDAY 20 AUGUST **Magdalen Hill Down: Meet the Butterflies**

As 27 July

TUESDAY 2 SEPTEMBER **Bentley Station Meadow: Walk to Health**

As 6 May

SUNDAY 7 SEPTEMBER **Magdalen Hill Down: Monthly Meander**

As 4 May

SUNDAY 5 OCTOBER **Magdalen Hill Down: Monthly Meander**

As 4 May

TUESDAY 7 OCTOBER **Bentley Station Meadow: Walk To Health**

As 6 May

Other Events

Main Committee meetings: Weds 7 May, 3 Sept, 3 Dec.

AGM and Members' Day: Sat Oct 25th Littleton Village Hall, Hall Way, off Main Road, nr. Winchester. Map and directions in September Newsletter.

Butterfly Summer

will be held in the

City Space

of

Winchester Discovery Centre

Jewry Street, Winchester

Four weeks

starting Saturday 26 July

(See "**40th Anniversary Celebrations**" in Chairman's Letter, pp.5 & 6)

SHOWS AND EVENTS 2008

We will be attending the following events during the summer and as we are hoping to increase membership substantially during this, our 40th anniversary year, **please volunteer to help**. If you could come and help at any one of them please get in touch with Jenny Mallett (see back cover).

Sunday 11 May	Spring Wildlife Day at Lymington-Keyhaven Wildlife Reserve: 11am to 4 pm.
Tuesday, Wednesday, Thursday, 29, 30, 31 July	The New Forest Show.
Monday, Tuesday 4/5 August	Sir Harold Hillier Gardens: 'Beautiful Butterflies' Family event; guided walks, craft activities.
Friday 15 August	Basingstoke Wildlife Week. Main event of the week to be held at Millfield, Old Basing.
Wednesday 20 August	Basingstoke Family Fun Day, Eastdrop Park, Basingstoke.
Saturday 30 August	Valley Park Woodfair, Chandlers Ford.
Saturday 13 September	Romsey Show.
Sunday 5 October	'Natures Harvest', Walled Garden, Basingstoke.
Sunday 12 October	Blackmoor Apple Day, Selbourne.

CHAIRMAN'S LETTER

Birthday Work Party Success

The 40th anniversary of Butterfly Conservation got off to an excellent start on 7 March with a well-supported work party at Magdalen Hill Down. Many thanks are due to Lynn Fomison, who masterminded the event, somehow arranged for superb weather and presented us all with a range of butterfly-inspired cakes. We were joined by Martin Warren and Rosie Boycott, a national journalist who seemed very impressed with what the Branch and BC are doing for butterfly and moth conservation. A total of 42 people came along during the day, and the *Southern Echo* printed pictures and a report on 12 March. BC are pushing membership recruitment very hard this year, so please do all you can to help recruit members to our Branch.

New Website

That same date (10.30pm on 6 March to be precise) also saw the launch of our new website and many thanks are due to Robin Turner for his excellent work on the redesign which configures to the main BC site. Robin is very keen that the site is not only used by us all (and visitors) but also has an appropriate dynamic. Please send him any interesting information that you consider might be posted, in particular sightings and images. We will use the website to notify events within the Branch: it is a forum you can use to let others know about any activities with which you are involved that may not appear in newsletters such as this.

Photography Workshop

The following day, Peter Eeles and colleagues ran an excellent photography workshop at Alice Holt. The social hut was full, and it was clear from the audience's enthusiasm that developments in digital photography have helped many people to further their interest in building their own photographic records. Our own social and photographic evenings have proved very popular, and it is clear that this interest will continue to grow; few people seem to go out to view species without a camera.

One concern is that photographers sometimes pay scant regard to the habitat when trying to obtain 'that ideal shot'. I suspect we have all been guilty of such misbehaviour. Last year's trampling of Stockbridge Down (in search of 'that' Black-Veined White) and the horde that visited Noar Hill for the second brood of Dukes caused considerable habitat damage, something we all need to watch.

40th Anniversary Celebrations

There is a lot of information in this Newsletter about the coming season's events. Our major contribution to the 40th anniversary is a month-long exhibition – **Butterfly Summer** – in Winchester's new Discovery Centre,

opening on 26 July. The Branch will be responsible for providing a third of the exhibits, and a working group is advising our hosts (Winchester City Council) about our contribution. We hope to be able to inform a wide audience of visitors about what we do, as well as providing talks during the exhibition and walks on our reserves, particularly Magdalen Hill Down. I would welcome any suggestions as to what we might include and any offers of help during the exhibition, particularly to be present in the City Space and to engage with visitors.

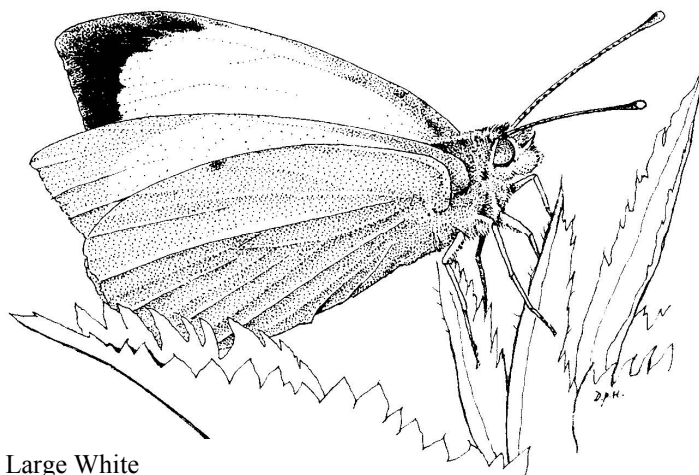
Summer Events

This Newsletter contains information about our programme for the summer (assuming/hoping we have one this year). We are very keen to encourage 'ad hoc' events, be they outings/walks or social events. Please use the website to promote any events you propose holding and use it as a point of contact if you would like to make suggestions about activities. Peter Eeles's study day could, for example, lead to a demand for walks with a photography-skills emphasis. Do not hesitate to get in touch if this is the sort of development that would be of interest.

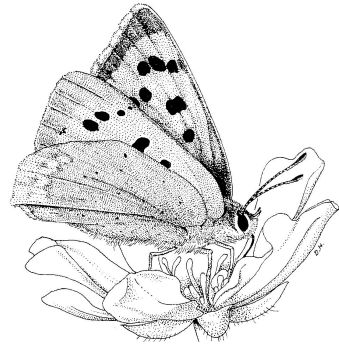
Looking ahead to nearer the end of the year, please note the date proposed for the AGM: Saturday 25 October at Littleton Village Hall, Littleton, nr. Winchester.

In the hope that this summer is significantly better than '07, have a great butterfly (and moth) season.

Roger Buchanan, Chairman



Large White
By Douglas Hammersley



JUNE BAILEY

The Committee were very sad to hear that June, a longtime member of the Branch, passed away at the beginning of the year. June, along with her husband Ken, was a very active member, attending field trips and helping with everything from butterfly monitoring and work parties to washing up at Members' Days. She had a particular interest in Bentley Station Meadow and was one of the original supporters of the Reserve. Her cheerful presence and help at work parties will be sorely missed, as will her home-made mince pies at winter work parties.

Branch member Peter Martin writes:

I was saddened to hear of the death of June Bailey in January.

With her husband Ken June had been an active member for over 20 years. I have been with June and Ken on many butterfly walks organised by the Branch and my memory of her will always be of a very friendly and cheerful person.

When I was leading the North-east Hants Area Group, she and Ken would willingly help with recording the numbers of Silver-studded Blue butterflies at Yateley Common (near to their home) and at Hawley Common. She helped man display stands at the various events we attended to promote Butterfly Conservation and was a willing helper at the talks and social events we arranged.

My wife Barbara and I, together with other Branch members, represented Butterfly Conservation at June's funeral service at Easthampstead Park Crematorium, where we learnt a lot more about her life. She was well loved by family and friends and we will all miss her greatly.



RESERVES NEWS

Visitors to Magdalen Hill Down Extension will notice some changes. A cattle corral has been installed in the NW corner. This is to make life easier for our graziers, Chris and Sarah Jackson, when they need to round up the animals at the end of the grazing period. We have designed the gates on the corral so as to give a direct link from the extension to Magdalen Hill North. This will also be really useful when John Britton needs to move the sheep from one part of the Reserve to the other. The gap created in the hedge by removing several derelict hawthorn bushes will also form an easy route for visitors to move between those parts of the Reserve. And, with visitors in mind, a seat has been installed near the corral, affording a lovely view up the Chilcomb Valley.

There is a less obvious change too. Charlie Gibson, our Scientific Adviser for the restoration of chalk grassland on the Extension, has just completed analysing the 2007 botanical data collected by Phil Budd with some help from volunteers. Charlie now has 10 years' worth of data (the first season after sowing was 1998). He considers that the sward is progressing the right way towards becoming like ancient chalk grassland. However, the change is not easy to detect by just looking; Charlie uses calculations based on which indicator plant species are decreasing or increasing.

It does not seem like 10 years since we were examining the sown area in March 1998. It was a sea of groundsel with hardly a blade of grass or broad-leaved plant to be found. Jenny Mallet with her farmer's hat on was convinced that nothing would be growing. Charles Flower cheered us up a bit by finding the occasional cowslip. And with his keen botanical eye Colin Matthews also espied some tiny seedlings of the chalk downland species sown the previous autumn.

By June the extension was a beautiful sea of poppies – not sown but just released from the seed bank in the ground by our cultivation. Now we look forward to the cowslips blooming each April. It has been described by visitors as the best meadow of cowslips in Hampshire; so if you haven't seen it do make a visit. By mid-summer scabious knapweed and bird's foot trefoil will have taken over. Look carefully and eyebright, fairy flax and harebells can be found. Both the sheep and cattle are creating worn winding paths which are not only good micro-climates for butterflies but are helping to give the Extension more of a natural character. For those of us who have known the area well since the early days the transformation from arable field to chalk grassland is a stunning one. Its success is an accomplishment of which Butterfly Conservation can be justly proud.

Lynn Fomison, Reserves Officer

PS. If you want to be kept informed of what is happening (maybe you would like to help us?) we issue a newsletter twice a year for each reserve. Contact me for a copy via email or post or access the Branch website.

And if you have not been to Magdalen Hill Down yet, there are a number of walks planned. It is easy to follow the changing seasons on our Monthly Meanders. Tell your friends – all are welcome.

One last point: it is really helpful when people visiting independently post sightings from the reserves on the Branch website.

PERSONAL HIGHLIGHTS – MOTHS 2007

There must have been a large awakening of hibernating moths on 16 February last year. My small actinic light attracted 22 Chestnuts during the night. One of the first moths of note was a small one with a very big name: *Semioscopis steinkellneriana*! Interestingly, it came to a new light that I was trying out which cost only £30. The same site (Dummer Woods) also produced one of my favourite small moths: the lichen –coloured *Acleris literana*.

As March ended and a glorious April progressed it seemed that 2007 might be as good for moths as 2006. None of us could have predicted the soaking that was to come; and Hampshire got off lightly! Len Winokur and I recorded over 30 species at MHD on 28 April, among them a Pinion-spotted Pug. A few weeks later we found Drab Looper and Cream Wave near East Stratton, but by then it was becoming more difficult to find a good night.

It just about managed to stay dry on Hampshire Moth Night. A Twin-spot Carpet was the highlight at Dummer, but moth action was slow. Where were the Emeralds? Even the common species were hard to find in June and July. I managed to flush out two Kent Black Arches at Winchester but they flew only reluctantly after being threatened with a brush cutter. A Garden Tiger larva appeared shortly before I got soaked while doing a butterfly transect on MHD.

August began with a beautiful Waved Black in Dummer Woods, quickly followed by a tatty one in the garden. Our two chalk downland reserves produced Six-belted Clearwings courtesy of pheromone lures, and I organised an interesting National Moth Night meeting on a cool star-lit Yew Hill. Over 50 species were recorded, including Dark-barred Twin-spot Carpet, Rosy Footman, Barred Rivulet, Bird-cherry Ermine and Tawny-speckled Pug. With more settled weather several moth nights were possible during September and October at MHD. Eight Feathered Gothics were found one evening and several Deep-brown Darts turned up. Tim Norriss recorded our first Figure of Eight on the Reserve. A few migrants, including Delicate, were found along with Yarrow Pug larvae. I had a good year with Pugs.

October was one of the best months of 2007. Delicate, Gem and Tawny Pinion were recorded at home. November was also good for the second year running. Cressida Wheelwright's woods at Preston produced over 20 Scarce Umbers plus numerous Winter Moths and Mottled Umbers. Furry December Moths came to the light, where her sharp-eyed daughter spotted Autumnal and Northern Winter Moths. My year ended as it had begun with a nice micro in Dummer Woods: the rapidly spreading *Acleris logiana* was also found near Micheldever. It is found on birch trees but closely resembles the bark.

Patrick Fleet, Reserves Warden

Butterfly Transects 2008

The Butterfly Monitoring Scheme was set up nationally in the late 1970s. It involves walking a fixed route (a transect) once a week, recording butterflies under specified conditions, between the beginning of April and the end of September. Currently there are some 88 transects for monitoring butterflies in Hampshire and the Isle of Wight, with 76 in Hampshire and 12 on the Island. Our longest-running transect was started at Old Winchester Hill in 1977. Three other transects at Alresford Farm, Ampfield Wood and Martin Down South were set up in 1979. Of the 84 transects initiated since 1980 just under 20% were set up in the 1980s, about a third in the 1990s and just under 50% since 2000.

The majority of our transects are in woodlands or on chalk downland sites, but we also monitor butterflies in a range of habitats including heathlands, meadows, gardens and in the wider countryside. We run transects at all three of our reserves: one at Yew Hill, one at Bentley Station Meadow and three on Magdalen Hill Down. Other transects are walked on land of various owners including the Forestry Commission, the National Trust, Hampshire and Isle of Wight Wildlife Trust, Natural England, the Woodland Trust, Hampshire County Council and local borough councils.

Owing to changing circumstances we need additional help with the following transects in 2008:

(The transect season starts on 1 April and although you will be reading this in mid-April it's not too late to get involved, so please contact me for further details.)

Crowdhill and Upper Barn Copses near Eastleigh

This site is owned by the Woodland Trust, and Pam and Peter Welch have walked a transect here every year since 1993. It is important we carry on monitoring as the Woodland Trust have recently completed some management work at this site and it will be interesting to see what effect this has on butterfly numbers.

Pignal Inclosure

This site is in the New Forest, near Brockenhurst, and was set up to monitor Pearl-bordered Fritillaries in 1998. The Pearl-bordered Fritillary is one of our high-priority species and it is essential we continue monitoring at this site. It is one of the few sites in south-east England where the species can be found.

Great Copse, Mottisfont

This site is owned by the National Trust; transect monitoring began here in 2007. Silver-washed Fritillaries and White Admirals make it an interesting site to monitor.

Ashford Hangers

This area of woodland is just north of Petersfield. It is owned and managed by Hampshire County Council. Some 27 butterfly species have been recorded here in recent years.

Single-species monitoring schemes

In addition to the standard transect which runs for 26 weeks from April to the end of September there is also a single-species monitoring scheme. This scheme is the same as the standard transect scheme but it is walked only for the weeks when the butterfly in question is flying. For instance, Alison Harper started a transect this year to monitor the Silver-studded Blue at Dibden Bottom in the New Forest and walked it only during the weeks when the butterfly was on the wing in June and July.

In 2008 we would like to set up some additional single-species monitoring schemes as listed below:

Wall Brown along the coast in the Keyhaven/Lymington area.

Silver-studded Blue in the western part of the New Forest.

Grayling at selected sites on the heathlands of north and north-east Hampshire.

Some transects are walked by one person and others are organised on a rota with up to five walkers to spread the load.

If you are interested in helping with an existing transect or would like to start one for a single species please contact me at:

lindabarker4@btinternet.com or tel. 02380 270042.

Full training will be given to all new transect walkers including help and advice on species identification.

Linda Barker, Butterfly Recorder & Report Editor

Butterfly Recording in 2008: **How to send in your records**

Paper Recording Forms. There are two standard recording forms enclosed with this Newsletter which may also be downloaded from our website.

- **The Butterfly Site Recording Form (green)**:- which should be completed when visiting the **same site on a number of occasions**.
- **The Casual Recording Form (yellow)**:- which should be completed when visiting a **number of different sites** during the season.

When completing these forms please enter **actual numbers** seen and not the old letter codes A, B, C, D and E.

As the number of records continues to increase each year it would save us time on data entry if you are able to send your data electronically, and would be greatly appreciated. However, if you do not have a computer please continue to send in your data on the paper recording forms, as we welcome all records.

Electronic Recording: There are three easy ways to send us data electronically:

- **Sightings Form** on website which you complete and send on-line. This data is displayed on the sightings page and subsequently entered onto our database.
- **Excel Spreadsheet**. If you wish to send your records using a spreadsheet please contact me and I will email a spreadsheet template to you (with instructions). This is designed for quick and easy data entry in a tabulated format.
- **MapMate**. If you would like to send in your data via MapMate please contact Dave Green.

Please remember: for a complete record we always require the following information:

**name of recorder; butterfly species name; date seen; site name;
grid reference; number seen.**

Garden Data

When sending in records from your garden, rather than send in everything you see each day please record the earliest and latest sighting and peak count for each species.

How to work out a grid reference:

The Ordnance Survey has a website which explains how to read grid references.

Visit: www.ordnancesurvey.co.uk/oswebsite/gi/nationalgrid/nghelp1.html

or contact me and I will send you some written instructions. If you would like to know the grid reference for your **garden**, contact me with your **postcode** and I will provide it for you.

Target Species

Small Tortoiseshell

This once common butterfly tends not to live in colonies; it is very mobile and can be seen in any habitat. It experienced another poor year last year, obviously not helped by the weather, but this year we may see a change in its fortunes; so please send in your records. Depending on the weather, the flight period is March to November (hibernators plus two summer broods)

Small Heath

This butterfly seems to follow a pattern of good and poor years. The last good year was 2003. Depending on how much the 2007 weather affected mating and egg laying, we are hoping that 2008 may see an upturn in its numbers. Please explore and look for this butterfly, especially in areas where its foodplant grows: fine leaved grasses such as *Festucas* spp.(Fescues) and *Agrostis* spp (Bents). Heathland sites and unimproved grassland offer the best prospects. Flight period: May–October (two broods).

Wall

As recently as 1992 this butterfly was widely distributed in Hampshire and the Isle of Wight but declined rapidly thereafter. Today it is still fairly widely distributed on the Island but in Hampshire it is now restricted to coastal areas. It is believed that the only remaining population in Hampshire is along the coast between Lymington and Keyhaven. This year we would like to establish the precise distribution of this species along this stretch of coast and to recheck sites where it has been found in the past, such as Hayling Island, Gilkicker Point and Portsdown Hill. The Wall has three broods, depending on the weather: usually, May to mid-June, end July to end August, and September-October.

Other Records

Apart from the target species we obviously want recorders to record all of the other species in Hampshire and the Isle of Wight. Please be adventurous and visit places other than the well known sites. 2008 is year four of the current five-year recording period.

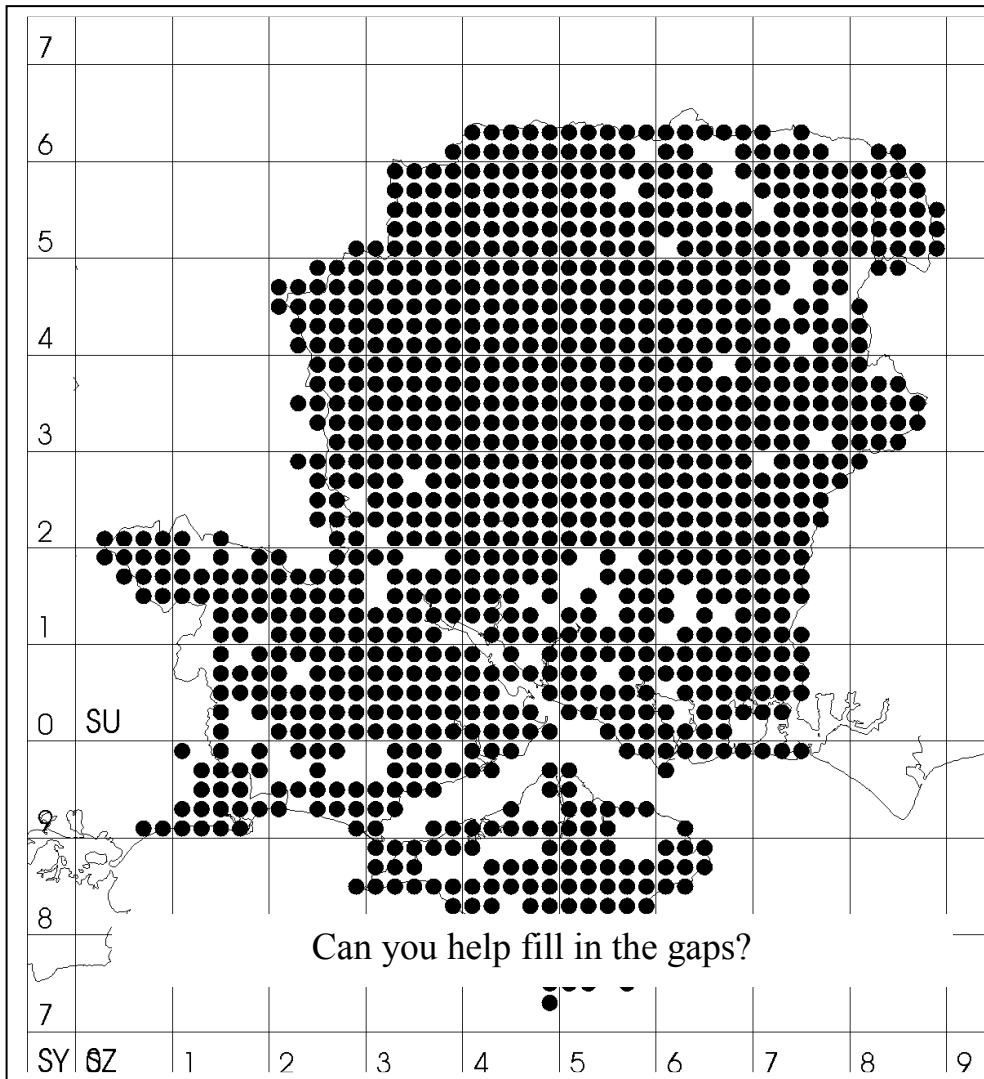
The map of Hampshire and the Isle of Wight on p.12 shows all the tetrads (2 x 2 km squares) for which we have data for 2005-2007. Please study the gaps, and see if you can help to fill them in. Then contact me to let me know which tetrad(s) you would like to survey. I will notify you of likely places to visit within your tetrad.

We are recommending a minimum of two visits: one in mid-May and the other in mid-July. If you have time for more visits we would suggest mid-June and mid-August. This map will also be on our website.

Linda Barker, Butterfly Recorder & Report Editor

APRIL 2008

Map of Hampshire and the Isle of Wight
showing all the tetrads (2 x 2 km squares) for which we have data
2005-2007



Can you help fill in the Gaps?

**Call Linda Barker
023 8027 0042**

On-line survey with BBC Radio 4: Hummingbird Hawkmoth and Painted Lady

Butterfly Conservation has developed an exciting on-line survey of these two migrant species in association with Radio 4's major series World on the Move and as part of the Garden Moths Count initiative. The survey will run throughout 2008 on the Butterfly Conservation website and gives us a great opportunity to raise awareness and engage with the general public.

Anyone who sees a Hummingbird Hawkmoth or Painted Lady butterfly can use the simple but amazing interactive mapping on the website to zoom in on satellite images (down to the scale of your own garden) and log their sightings. This will enable us to track the arrival of these wonderful creatures in the UK on their journey from North Africa and southern Europe, and then to map their spread here during the summer.

We are also keen to hear of observations of interesting behaviour (such as courtship, mating, egg laying, choice of plants for nectaring, reverse migration in the autumn or hibernation), which can be recorded in a comments box in the on-line recording system. What we do know about the migration of these spectacular insects comes from observations over the centuries from amateur recorders, but there is still much to learn and we hope that the public will help in 2008.

New Website Launched

The Branch launched a new version of its website on 7 March to coincide with the 40th anniversary of Butterfly Conservation.

As well as a new look, the website features pages describing all the butterflies and some of the moths to be found in Hampshire and the Isle of Wight. Each page carries details of the butterfly, one or two photographs, a distribution map and a flight-time indicator. **Hint: move your mouse over the photograph to check if there is a second one there.**

Our webmaster, Robin Turner, is keen to include photographs from as wide a range of people as possible, so if you have any photographs of butterflies or moths taken in Hampshire that you are particularly proud of and would like to have them on the website then please forward them to Robin at webmaster@hantsiow-butterflies.org.uk

He plans to keep the website looking fresh by changing the photos regularly, so please be patient if yours doesn't appear straight away.

The site can be found at [**www.hantsiow-buttessflies.org.uk**](http://www.hantsiow-buttessflies.org.uk)

Sightings Review

2008 has got off to a much slower start than 2007. The first Red Admiral was not reported until 9 January, seen braving the strong winds at Magdalen Hill Extension by Paul Guymmer. In contrast there were nine sightings of Red Admiral on 1 January in 2007. The first Peacock sighting was from Titchfield Haven on 12 January. There was a further scattering of Red Admiral sightings through January, and the first Brimstones were reported by Sue Clark and Robin Turner on the 26th. The final new species sighting for January was an exceptionally early Painted Lady seen in Gosport by Leslie and Elizabeth Martin.

The start of February continued on the low January key with small numbers of Red Admiral, Peacock and Brimstone reported. Then on the 8 February we were surprised by Andy Collins's report of two Small Whites in Shirley, Southampton. On the same day Andrew Bolton saw the first Small Tortoiseshell of the year in Tadley. This was followed on 9 February by the earliest ever sighting of Holly Blue, in the Hermitage Garden, Gosport by Peter Bowker. On the same day Ashley Whitlock had the first Comma of the year along with good numbers of Red Admiral and Brimstone at the Queen Elizabeth Country Park. The 12th brought a sighting of Large White by David Tinling, again at the Hermitage Garden, also an earliest ever sighting. Things seemed to be hotting up!

The remainder of February and early March produced small numbers of Red Admiral, Peacock, Brimstone and the odd Small Tortoiseshell, Comma and Holly Blue. Peter Durnell disturbed a hibernating Large Tortoiseshell at Normandy Farm, Lymington on 14 March and followed this by a sighting of Speckled Wood also at Normandy Farm on the 21 March.

The cold weather at the end of March really slowed things down with David Tinling commenting that he had seen only 6 Red Admirals by the 22 March, compared with 13 in January and 36 in February. In his words, instead of the expected Great Awakening we were experiencing the Great Anticlimax.

To date 11 species of butterfly have been reported from Hampshire and the Isle of Wight.

Robin Turner, Webmaster

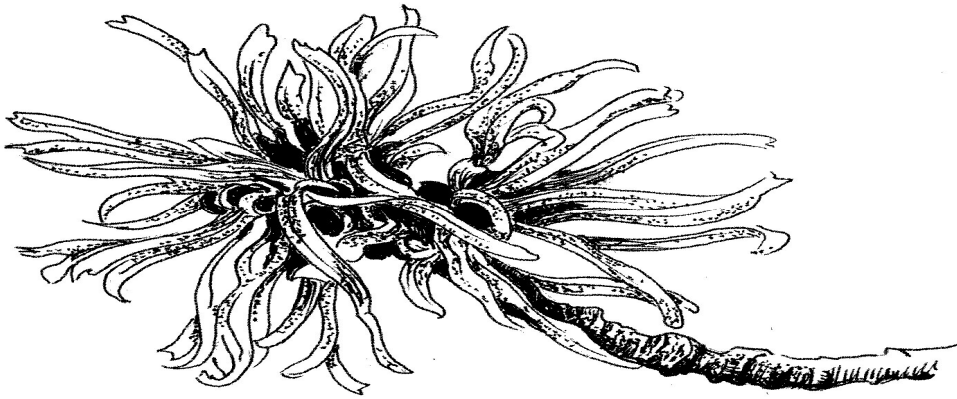


Brimstone
By Douglas Hammersley

NEW MEMBERS SINCE JANUARY 2008 NEWSLETTER

The Branch extends a warm welcome to the following new members. We hope you will enjoy your membership and participate in some of the events listed in this Newsletter.

Mr WN Clinch, Covingham, Wiltshire; Ms S Dooley, St. Leonards-on-Sea, East Sussex; Mr T Filbee, Newtown Common, Berkshire; Miss SH Frost, Locks Heath; Mr P Hope, Odiham; Mr M Imrie & Mr CW Chivers, London; Mr JM Kipling, Westbourne; Mr S Lamb, Rotherwick; Mrs HJ Lewis, New Milton; Mr MJK Nichols, London; Miss JE Thornton, Eastleigh; Miss M Smee, East Cosham; Ms CA Vise, Hamble; Mrs AM Walker, Lee-on-the-Solent; Mr P Young, Medstead.



Wouldn't it be lovely.....

if one day "BC" was as familiar in British vocabulary as "RSPB"? Well, we are all working hard towards this becoming a reality. We want to tell people what Butterfly Conservation does and how important butterflies and moths are. This year we are planning to publicize some of our field trips and meetings in local "What's on" and Parish magazines. The hope is that some people will be tempted to join a trip and see the lovely butterflies and moths that inhabit areas on their doorstep, and that they may not even know exist. Perhaps then they will become "hooked".

Do you have a local community magazine or newsletter that you feel would be a suitable publication for us to send information to? If so, I would be very grateful if you would please send me the name of the publication and contact details for the editor. My contact details are on the inside back page of this Newsletter. Thank you.

Janet Jones, Publicity Officer

SOUTH EAST AREA GROUP NEWS

Staunton Country Park

The flooding of the Gypsies Plain area of the Staunton Country Park to create a mile-long reservoir is nearing realization, with work expected to start in 2015 in order to meet water demand later this century. Owner Portsmouth Water Ltd. is minded to attempt translocation of rarer flora and fauna. No butterfly Priority species are known to inhabit the site.

Cams Bay (Birdwood Grove) Public Open Space, Fareham

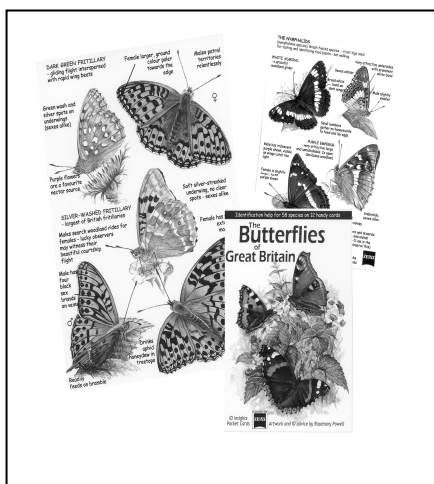
SEAG was invited to meet the Fareham BC ranger Della Craven to discuss improved management and tree planting at Cams Bay on 4 April. Much of the site is overrun with bramble and blackthorn; the remainder is frequently mown grassland used primarily by dog walkers.

Hill Head

SEAG is to advise owners Fareham Borough Council on the establishment of a butterfly transect at Seafield Park, Hill Head. Mike Gwilliam has agreed to represent the Group.

andrew.brookes@port.ac.uk

BUTTERFLY IDENTIFICATION CARDS FOR SALE



Each pack contains 12 pocket-size laminated cards of full colour illustrations with notes picking out key features to look for and helpful information on flight periods and habitat.

Packs cost £5.95 + postage: £6.50.

Contact :- Rosemary Powell (01329) 668465
or email dan.powell@care4free.net. A donation will be given to the Branch from any sales.

Butterfly Transect Data On-line

You can now access detailed butterfly transect data for the whole country via the UK Butterfly Monitoring Scheme website. I thought I should let you know what is on offer and how to access it.

From the ukbms home-page (www.ukbms.org) click on "site location" to start. A satellite image of the UK will appear with boxes for each country. To access Hampshire and Isle of Wight data click on the "England" box, then click on marker for Hampshire, Isle of Wight, or any other county of interest. You can hover over the symbol to see which county and how many transect monitored sites.

Having clicked on county you get a satellite image (default) with a butterfly symbol marking each site. I would suggest you click on "map" at the top to switch from satellite image to map, making it easier to locate where you are. Hover the cursor over individual symbols to see which site they represent. For multiple sites in close proximity (e.g. three transects at Magdalen Hill Down) you'll need to use "+" to zoom in to separate them out. Once you've found the site you're interested in (e.g. Pamber Forest at the very top or Magdalen Hill Down in the middle) click on the symbol to access data and information about the site. Where available you'll get a map of the transect route. If you scroll down the page you get a choice of "species count" and "species list". If you click on "species count" you can access a weekly-count summary table for individual years (up to 2006 at present). This will enable you to get an idea of population sizes and to decide on the ideal time to visit a given nature reserve to see a particular species. Please remember, however, that not all sites are open to the public and that private sites should NOT be visited without the permission of the owner. From the transect data page you can even click on a species name and get an image of the butterfly with accompanying description.

If you go back to the front page for a site and click on "species list" you get an assessment of the species status at the site and a mean count. Even better than this, particularly if you are a site manager or someone interested in trends, if you click on "more" you get a really nice graph showing the trend for a particular species at your site compared with the national average. We've been doing a similar thing in our Annual Report for many years, showing individual site trends versus the Hampshire & Isle of Wight average, but now you've got the chance to compare with the national average. There's plenty more available, but I'll leave it to you to explore!

Andy Barker (Transect Co-ordinator & Chairman of Conservation
Subcommittee)

ELM STUDY NEWS

LUTÈCE elms for Hayling

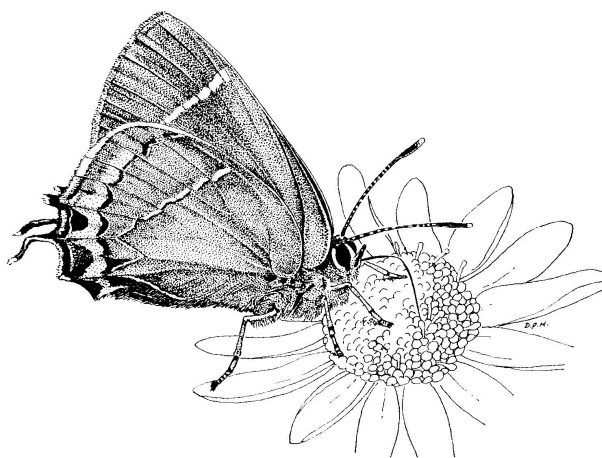
SEAG has sourced and supplied 25 LUTÈCE elms for the restoration of an ancient hedgerow at The Manor, near the hamlet of Stoke in the centre of Hayling Island. The island is traversed by numerous hedgerows with diseased English Elm, but this is the first initiative that we are aware of to replace the trees. Encouragingly, neighbouring landowners have expressed interest in planting LUTÈCE next winter.

New trees

Six *Ulmus macrocarpa* seedlings were obtained from the Henny Kolster nursery in Boskoop, Netherlands, which specializes in rare shrubs and trees. *U. macrocarpa*, (literally ‘big-fruit elm’ on account of its large 50mm dia. wafer-like samarae) is one of the few elms that thrive in drought conditions. It is now considered endangered in its native land and has been added to the Chinese ‘Red Data’ book. Our trees were grown from seed supplied by the Beijing Botanic Garden.

The Istituto per la Protezione delle Piante (IPP), Florence, has sent us 10 specimens of its latest cultivar to be released. Named ‘Fiorente’, which translates as ‘flourishing’, it is the fastest-growing yet, achieving increases in height of 1.5m per annum even when grown on poor clay soils in the Apennines. Derived from a crossing of the Siberian Elm *U. pumila* and a variety of Field Elm *U. minor*, it is being promoted in Italy as a hardwood timber tree. There being no such thing as a free elm, SEAG is conducting a bud-burst phenology study of all seven of its Italian cultivars elms on behalf of IPP this spring.

andrew.brookes@port.ac.uk



White-letter Hairstreak
by Douglas Hammersley

PLANTING FOR BUTTERFLIES

No. 3 Holly *Ilex aquifolium*

The Species

The native holly, *Ilex aquifolium*, makes a robust bush or small tree sometimes growing to a height of 20 m. It is a classic example of a dioecious species, with distinct male and female trees, unlike the hermaphroditic elm with its 'perfect' flowers featuring the male and female parts, or the monoecious oak with its discrete male (catkin-like) and female flowers a few inches apart on the one branch.

A slow-growing evergreen, holly thrives in both sun and shade and tolerates most soil types but not waterlogged ground. It is the main larval host plant of the spring brood of the Holly Blue: the larvae burrow into the berries on the female trees. It was once thought that ova laid on the male flowers were doomed, but it appears the larvae are able to survive on the tender leaf shoots in lieu of the berries.

Cultivation

The simplest means of propagation is by seed, although several winters may be needed to stimulate germination. However, as the tree often self-seeds generously, it may be easier simply to lift tiny self-sown seedlings growing around older female trees by 'sleight of trowel', and pot them on. It is important to note that this is only possible with very small plants; the holly quickly establishes a deep tap root and it is seldom possible to remove older seedlings without occasioning fatal damage. For the same reason, potted seedlings should be planted out after only one year.

As it is impossible to sex the trees until of flowering age, it is advisable to plant in clumps to ensure a mix of the sexes and guarantee pollination. This gender problem can be overcome by rooting cuttings from mature 'sexed' trees, using semi-ripe wood with a heel taken in August and placed in a shaded cold frame for at least 12 months before potting-up. Alternatively buying from nurseries, notably hedging specialists, can be recommended as commercial stock will also have been cloned. The common cultivar 'Alaska' is female, 'Atlas' male. Prices of small (< 30 cm high) plants range from around £2 to £3 each, depending on the number ordered.

Planting-out

Potted plants should be planted out in autumn. As the leaves are relished by deer, and the bark by rabbits, tube protection will be required for a few years where such vermin are present.

Health & Safety

The berries contain saponins and are toxic, causing diarrhoea, vomiting and stupor. However toxicity levels are low, so problems are unlikely to arise unless the berries are ingested in large quantities.

Gardens

The holly can make an attractive free-standing tree or be used as a hedging plant *par excellence* by those with limitless patience. Dozens of cultivars are available, including the weeping 'Pendula' (female only) and variegated-foliage 'Aurea marginata' (male only). The RHS *Plantfinder* lists them all, and can now be accessed via the internet at:

<http://www.rhs.org.uk/rhsplantfinder/plantfinder.asp>

andrew.brookes@port.ac.uk

Honesty/Garlic Mustard

I was surprised to read in the January Newsletter that the "Orange Tip larvae rarely thrive" on honesty. I have not found this to be the case in this north-eastern margin of the New Forest. Here, on a heavy clay soil, the Orange Tip lays its eggs on Cuckoo Flowers or Honesty, in the absence of Garlic Mustard. For the past 17 years I have brought into the porch a few eggs on Cuckoo Flowers and in some years of food shortage I have weaned the larvae onto Honesty pods without trouble. Occasionally I have taken larvae from Honesty plants, which tend to flower rather later than Cuckoo Flowers, and they have successfully produced Orange Tips for the following season.

Last year two Honesty plants had so many larvae on them that I removed four to save them from birds visiting the nearby bird table and picked a twig of Forsythia for them to pupate on. Three did so, but the fourth preferred to pupate on a brown label on a bottle standing close by. In previous years the bright green pupae have ALWAYS changed to brown in a few days and I had begun to doubt the veracity of the claim that there were two forms – a brown form and a less common green form. But the three pupae on the Forsythia twig have kept their green colour throughout the winter and are now easily distinguished from the withered leaves around them. The one on the brown bottle label is brown. So there ARE two forms. Is the green form more frequent amongst larvae on Honesty? Does camouflage exert an influence? Or has a visiting butterfly introduced new genes? I await emergences with special interest this year and would welcome comments from readers with relevant experience.

Joyce Gifford, Bartley, New Forest

Plant One Thing

One of the themes for this year's Save Our Butterflies Week (19-27 July) is the "Plant One Thing" campaign. The objective of this campaign is to encourage everybody to have at least one butterfly-friendly plant in their garden.

Now is a good time to be thinking about the plants you would like to grow in your garden to attract butterflies and moths. It is the time year to sow seeds of the annual flowers that butterflies and moths so enjoy nectaring on. These include Candytuft, Tobacco Plant, French Marigold and Cornflower. Look out for self-sown seedlings of Honesty, Dames Violet (Sweet Rocket) and Evening Primrose appearing in your garden that can be transplanted to a more appropriate position if necessary.

It is also a good time to divide clumps of perennials such as Sedum, Michaelmas Daisy, Phlox and Primrose (once they have finished flowering). Herbs such as Mints, Thymes, Chives and Marjoram (Oregano), adored by many butterflies and moths and other insects too, can also be propagated now.

If you like to grow wild flowers there are plenty to choose from: Red Campion, Bugle, Viper's Bugloss, Cowslip and Bird's-foot Trefoil, for example, are just a few. There are plenty of suppliers offering seeds and plants of our native wild flora these days. (Always make sure that you choose a reputable supplier to ensure that plants have not been taken from the wild.)

How about offering any surplus plants to your neighbours, family and friends? You could also suggest that they might like to plant a Buddleia in their garden, if they don't already have one. And perhaps you could have a little competition to see who has the most butterflies and moths visit the garden this summer. You will be helping everybody to "Plant One Thing" and learn a little more about these beautiful creatures. You will also be helping to conserve our butterflies and moths in a very constructive way.

Janet Jones, Publicity Officer



BOOK REVIEW

Nomads of the Wind: The Migration of the Monarch Butterfly and other wonders of the butterfly world by Ingo Arndt, Claus-Peter Lieckfeld & Peter Huemer. Papadakis

Publishing, London, www.papadakis.net.

ISBN 978-1901092-92-9 • publ. April 2008 • £20 hardback • 192 pages in full colour.

Special offer £17 (incl. p&p) to members of Hants & Isle of Wight Branch of Butterfly Conservation. Phone Papadakis Publishing on 01635-248833 or email info@papadakis.net mentioning the special offer price.

This book is lavishly illustrated in full-colour A4 format. It is well worth the price for the images alone, by Ingo Arndt, one of the world's most renowned nature photographers, but the text is also a joy to read and highly informative. It's really two books in one: the first half documents the Monarch's amazing migration across the USA, and the second presents amazing images and facts for the life-cycle stages of some butterfly and moth species. The book has roughly 50 pages of text to 140 pages of images, and given that most images occupy a full or double page you can appreciate how spectacular they are.

The main feature of the book is an account of the Monarch migration from the perspective of a tagged Monarch (*GJE 148*) on its epic journey from close to the Canadian border through the USA to its over-wintering site in Mexico, then back again through the several generations of the return journey. The trials and tribulations of *GJE 148* are punctuated by brief presentations of scientific research on topics relevant to the Monarch and to butterflies in general (e.g. navigation methods, climate change). My only disappointment was the lack of a bibliography, but this is a small criticism for such a beautifully produced book. I read the book cover-to-cover in an evening. The images are stunning, with spectacular Monarch aggregations, some wonderful habitat shots and of course a number of close-ups, including a beautiful sequence recording emergence from the pupa.

The second half of the book describes the weird, the wonderful and the extreme of the butterfly and moth world, including the biggest, the smallest and the bravest. There are some outstanding caterpillar photos, but I particularly enjoyed the ultra-close-up shot of an intoxicated Owl butterfly on a rotting banana, and the Death's-head Hawk-moth inside a bee-hive drinking honey and totally surrounded by bees.

Anyone with an interest in butterflies and photography will find this a most fascinating book. If you have a particular interest in the Monarch it's an absolute must. The authors and publishers are to be congratulated.

I can strongly recommend this work to you all.

Andy Barker, Chairman, Conservation Subcommittee

FIELD TRIP PROGRAMME

See also the excellent programme of walks on our Reserves this summer in the Diary of Events on pp. 2 & 3.

If the weather looks doubtful please check with the leader in advance. For walks that start in the morning it is advisable to bring lunch. For your safety and comfort wear strong shoes and appropriate clothing, use sunscreen, carry a drink, heed all safety advice, watch out for hazards like rabbit holes, and inform the leader if you wish to leave early.

This year we have noted the less common species we would like to see on our walks. As always there are no guarantees, but each year we do see 40 or so of the 46 butterflies found in Hampshire – and that's without counting the moths. Let's do even better this year as we celebrate Butterfly Conservation's 40 years of saving butterflies, moths and their habitats. We are planning for an experienced member of the Branch's Main Committee to be present on all our butterfly walks this summer.

Finally, **FIELD TRIPS ARE FOR EVERYONE**. You most emphatically do **NOT** have to be an expert to come on a field trip. Field trips can be enjoyed by anyone with any level of knowledge (or none). Photographers, children (with adult supervision), first-time field-trippers, you are **ALL** welcome.

SUNDAY 20 APRIL ITCHEN STOKE MILL

Leader: Lynn Fomison (01962) 772251. **Meet:** 9.30am. The mill is situated a few hundred yards east of The Bush public house at Ovington (SU 563 317). This is a chance to explore the ancient water meadows by the River Itchen owned and managed for their historical and conservation value by Roger & Victoria Harrison. Map: Winchester 185.

Target species: It should be possible (weather permitting) to see moths from the previous evening's moth lamp and any early butterflies on the wing.

SATURDAY 3 MAY HOLMSLEY, NEW FOREST: MOTH EVENING

Leader: Richard Coomber (01590) 674471. **Meet:** 8.30pm in the car-park at SU 223 012; trapping along the old railway track.

Target species: Small Chocolate-tip. Bring torch and warm clothing.

SUNDAY 11 MAY BLASHFORD LAKES STUDY CENTRE

BC Moths Count Event. Caterpillar Workshop with Paul Waring. Booking essential for this event. Contact Sarah-ann Boon saboon@butterfly-conservation.org at Lulworth office (01929) 400209.

SUNDAY 11 MAY BUTSER HILL National Nature Reserve

Leader: Ashley Whitlock (02392) 731266. **Meet:** 10.30am. Leave A3M at Clanfield junction; at Clanfield crossroads take north lane and follow signs to Butser Hill car park (SU 711 199). There is a car park charge. Not suitable for the faint-hearted as there are very steep slopes. Wear walking boots. Map: Chichester 197.

Target species: Green Hairstreak, Small Heath, Dinky and Grizzled Skippers.

SATURDAY 17 MAY NEW FOREST (Joint with Dorset Branch)

Leader: Jonathan Cook. **Contact:** Linda Barker (02380) 270042. **Meet:** 10.30am in New Copse Inclosure. Turn off A337 at Brockenhurst by the Balmer Lawn Hotel onto the B3055 to Beaulieu. After 2 miles look for entrance to Roundhill Campsite on the right at SU 329 024; turn left opposite this entrance onto a gravel track (there will be a Butterfly Conservation sign). Park about 75m along this track on left. Bring lunch. Map: Solent 196. **Target species:** Pearl-bordered Fritillary.

SUNDAY 25 MAY DEAN HILL

Leader: Ches Carpenter (01794) 884175. **Meet:** 10.30am in car park at the former RNAD at Dean Hill, to the east of West Dean (SU 261 267) on the right hand side of the road to Lockerley, opposite timber yard. Bring lunch. Map: Salisbury 184. **Target species:** Duke of Burgundy.

WEDNESDAY 28 MAY MARTIN DOWN (Joint with Dorset Branch)

Leader: Brian Fletcher (01962) 882746. **Meet:** 10.00am in car park off A354 (SU 037 201). We will probably start by looking at results of previous night's moth lamp followed at about 11.00 am with walks on both downland and woodland areas. Bring lunch. Map: Salisbury 184. **Target species:** Adonis Blue, Small Blue.

SATURDAY 31 MAY BENTLEY WOOD

Leader: Brian Fletcher (01962) 882746). **Meet:** 10.30am. From West Dean take minor road north towards West Tytherley; after one mile take left fork towards the Winterslows. Drive about a quarter mile and turn into small gravel track on left. Drive up track to car park (SU 258 292). Bring lunch. Map: Salisbury 184. **Target species:** Fritillaries, one of the Bee Hawk-moths, dragonflies and possibly Argent & Sable.

SATURDAY 7 JUNE: EVENTS FOR NATIONAL MOTH DAY & NIGHT

- **MARTIN DOWN:** **Leader:** Pete Durnell (01590) 674656. **Meet:** 1.30pm at main car park off A354 (SU 035 201) to look for day-flying moths, including Narrow-bordered Bee-hawk.
- **MARTIN DOWN MOTH EVENING:** **Leader:** Pete Durnell (01590) 674656. **Meet:** 10.00pm at main car park off A354 (SU 035 201). Lamps will be run behind the scrub adjacent to the car park. Running a moth lamp here at this time of year is always exciting and numbers can be spectacular. Good numbers of Hawk-moths should be seen. Bring torch and warm clothing.
- **PAMBER FOREST MOTH EVENING:** **Leader:** Graham Dennis (01189) 700155 or 07770 891126). **Meet:** 9.30pm at Impstone Road, Pamber Heath (SU 621 617). Bring torch and warm clothing. The lamps will be run all night and you are welcome to come along at **7.30am on Sunday 8 June** to take a look at the catch. A joint event with HWT.
- **BLASHFORD LAKES STUDY CENTRE MOTH EVENING:** **Leader:** Bob Chapman (01425 472760). **Meet:** 9.00pm at the Study Centre SU 151 079. Turn east off the A338 Salisbury Road into Ellingham Drove and then turn right after 300m down the track towards the Study Centre. Bring torch and warm clothing. A joint event with HWT.
- **WINCHFIELD MOTH EVENING:** **Leader:** Tim Norriss (01264) 354944. The evening is courtesy of Janet and Ken Jones. Please phone to book your place (01252) 842174 or email janet@mauvedrop.com

- **CLAYLANDS, BISHOPS WALTHAM MOTH EVENING:** **Leader:** Pete Potts (02380) 456484. **Meet:** 7.45pm at Claylands Road, Bishops Waltham (SU 548 180). Bring torch and warm clothing. Cost: £3 adults and £1 children. Refreshments provided. Event organised by HCC.

SATURDAY 7 JUNE **BULFORD RANGES** (Joint with HWT, Wiltshire Branch and Bulford Conservation Group). **Leader:** John Moon, HWT (01264) 710123. **Meet:** 11.00am at SU 213 462, just off the Bulford to Tidworth Road, where the tarmac military road to Frange widens to a car park (intention then is to drive further into range). Walk for butterflies and flowers in the Nine Mile River and Silk Hill areas of Bulford Ranges. Bring lunch. Map: Salisbury 184.

Target species: Marsh Fritillary, Adonis Blue, possibly Duke of Burgundy, and many wildflowers. **Note:** Access depends on military activity on the day; we may have to divert to an alternative site.

SATURDAY 7 JUNE **PORTSDOWN HILL**

Leader: Richard Jones (02392) 389623. **Meet:** 9.00am to view results of previous night's moth lamp, followed by walk at 10.00am. Meet at the last gate at Fort Widley (car parking available) on Portsdown Hill Road B2177 (SU 655 065). Map: Solent 196.

Target species: Small Blue.

SUNDAY 22 JUNE **WINNALL MOORS (HWT Reserve)**

Leader: Andy Barker (02380) 270042. **Meet:** 10.30am, Durngate Car Park, Winchester (SU 485 297). From north/east, head into Winchester from Jct 9 of M3. As you enter Durngate Place at bottom of hill, turn right into small car park opposite Willow Tree pub. From west/south follow Winchester one-way system until police station where you bear left. Car park is immediately on your left. A leisurely stroll (approx. 2 hours) in a short circuit along the River Itchen and Itchen Navigation. Map: Winchester 185.

Target species: Scarlet Tiger moth (one of Hampshire's most spectacular day-flying moths) and possibly a good range of dragonflies and, if we're lucky, water voles.

SATURDAY 28 JUNE **HAZELEY HEATH (Hartley Wintney)**

Leader: Adam Green, Hart Grounds and Countryside Manager. **Contact:** Janet Jones (01252) 842174. **Meet:** 10.30am 0.5 mile north of Hartley Wintney on the B3011 in lay-by opposite Arrow Lane (SU 756 578). The site is part of the Thames Basin Special Protection Area, and an SSSI. Morning only. Map: 175.

Target species: Silver-studded Blue.

SATURDAY 5 JULY: EVENTS FOR HAMPSHIRE MOTH NIGHT

- **IVY WOOD, BROCKENHURST MOTH EVENING:** Leaders: Richard Coomber (01590) 674471 & Pete Durnell (01590) 610021. **Meet:** 9pm at car park off the Brockenhurst/Beaulieu road at SU 315 025. Bring torch and warm clothing.
- **WINCHFIELD MOTH EVENING:** **Leader:** Tim Norriss (01264) 354944. The evening is courtesy of Janet and Ken Jones. Please phone to book your place (01252) 842174 or email janet@mauvedrop.com.
- **MILLFIELD, OLD BASING MOTH EVENING:** **Leader:** Mike Wall (01256) 819631. **Meet:** 9.30 pm at the gate into Millfield at Bartons Mill (SU 662 531). Bring torch and warm clothing.

- **KEYHAVEN MOTH EVENING**: **Leader:** Pete Durnell (01590) 674656. **Meet:** 9.30pm. Park at Keyhaven harbour (SZ 308 916). Moth lamps will be run next to the reserve and Avon Water reed-bed along the gravel track at SZ 310 918. Bring torch and warm clothing.

SATURDAY 5 JULY **RYEWATER NURSERY, FOLKE** (Joint with Dorset Branch). **Leader:** Brian Dicker (01963) 32453. **Hants Contact:** Lynn Fomison (01962) 772251. **Meet:** 1.00pm in field car park. Owner Clive Farrell has invited us once again to visit his flower-rich meadow restorations and the areas landscaped specifically for butterflies and dragonflies. The field car park will be open from 12 noon for those who would like to picnic. Travelling west on A3030 go through Bishop's Caudle and past a public house, then take minor road left on sharp bend. Continue about 2½ miles; turn left at T-junction and travel for approx. ¾ mile (ST 663 108). Map: Dorchester 194.

SATURDAY 5 JULY **PERHAM RANGES** (Joint with HWT)
Leader: John Moon, HWT (01264) 710123. **Meet:** 11.00am at SU 259 484. From Weyhill to Tidworth Road, turn into Benin Road beside the SPAR shop in Perham Down. After ¼ mile turn left beside a brick hut. Park at northern end of old ranges. We will take a walk of about five miles (round trip) into the centre of the ranges. A lunch break is included and we should finish at about 3.00pm. Map: Salisbury 184.
Target species: Dark Green Fritillary and many wildflowers.

SUNDAY 13 JULY **AXMANSFORD**
Leader: Andrew Bolton (0118) 9812948. Mob: 07900 527980. Please call mobile if lost. **Meet:** 10.30am at SU 566 606. From A339 Basingstoke to Newbury road take right turn marked "Wolverton Common & Axmansford". Keep on for almost two miles; park on or near grass verge at entrance to minor road on right. Bring lunch, watch for ticks. Map: Newbury 174.
Target species: Silver-washed Fritillary, White Admiral, Purple Hairstreak, possibly Purple Emperor.

SATURDAY 19 JULY **CRAB WOOD /PITT DOWN**
Leader: Brian Fletcher (01962) 882746. **Meet:** 10.00am to view results of moth lamp set overnight, followed by walk at about 10.30am. Meet in the Spindle Tree car park at the edge of Pitt Down on the north-west side of the minor road from Winchester to Farley Mount (SU 422 292). Bring lunch. Map: Winchester 185.
Target species: Dark Green and Silver-washed Fritillaries, White Admiral.

SUNDAY 20 JULY **PAMBER FOREST** (Joint with Upper Thames Branch)
Leader: Graham Dennis, HWT Reserves Officer (0118) 970 0155. **Meet:** 10.00am at the car park in Impstone Road, Pamber Heath, at the north entrance to Pamber Forest, adjoining Silchester Common (SU 616 620). Walk in woods in the morning, return to car park for lunch and extend the walk on to the common in the afternoon. Map: Reading 175.
Target species: White Admiral, Silver-washed Fritillary, Purple Hairstreak.

SATURDAY 26 JULY **BROCKENHURST VILLAGE HALL**
BC Moths Count Event. An afternoon meeting about the moths and Crimson Underwings of the New Forest hosted by Dave Green, followed in the evening with a mothing session hoping to catch and look at some examples. Booking is essential for this event. Contact Sarah-ann Boon saboon@butterfly-conservation.org at Lulworth office 01929 400209.

SUNDAY 27 JULY **BEAULIEU HEATH (disused airfield)**

Leader: Steve Lankester (01590) 682421. **Meet:** 10.30am in car park at former Beaulieu airfield (SU 357 004). Take entrance track on right off the B3054 Beaulieu to Lymington road then turn left to car park. Stout footwear and protection against ticks recommended. Map: Solent 196. **Target species:** Grayling, Silver-studded Blue and dragonflies.

SATURDAY 2 AUGUST **SOUTHAMPTON OLD CEMETERY**

Leader: John Vetterlein (02380) 636080. **Meet:** 11.00am at the Main Gates to cemetery, at the far end of Cemetery Road SU 414 136. Free parking in road. This 27 acre Victorian cemetery to the south of Southampton Common is now managed to conserve fauna and flora and grades from heathland to grassland to wood. Morning only. Map: Solent 196. **Target species:** late summer butterflies in profusion, especially gatekeepers, and wildflowers.

SATURDAY 9 AUG **THE MOORS, BISHOPS WALTHAM MOTH EVENING**

Leader: Pete Potts (02380) 456484. **Meet:** 8.00 pm at Chase Mill car-park, Winchester Road (B2177), Bishops Waltham (SU 558 169). Bring torch and warm clothing. Why not come back the following morning and help the ranger go through the night's catch and have a breakfast too? **Meet: Sunday 10 Aug:** 7.00am till 9.00am. Cost: £3 adults and £1 children; booking essential for the breakfast. Event organised by HCC.

SATURDAY 9 AUGUST **BROUGHTON DOWN (Joint with HWT)**

Leader: Brian Fletcher (01962) 882746. **Meet and park:** 10.30am at the end of Buckholt Road (SU 301 325) off the B3084 at the west end of Broughton village, to explore the Hampshire Wildlife Trust's Broughton Down reserve. Bring lunch. Map: Winchester 185. **Target species:** A wide range of wildflowers, plus Adonis Blue, and Silver-spotted Skipper.

SUNDAY 10 AUGUST **MARTIN DOWN (Joint with Dorset and Wiltshire**

Branches). **Leader:** Andrew Daw (07778) 146297. **Meet:** 11.00am. **Note: different meeting point.** From A354 Salisbury to Blandford Road, turn south at the Coote Arms. In Martin village turn into Sillens Lane at triangular green. Car park is at end of road (SU 058 192). Bring lunch. Map: Salisbury 184. **Target species:** Chalkhill Blue and other grassland species.

SATURDAY 16 AUGUST **STOCKBRIDGE DOWN**

Leader: Brian Fletcher (01962) 882746. **Meet:** 10.00am to view results of moth lamp set overnight, followed by walk at about 10.30am. Meet in car park on right, when travelling from Winchester on the road to Stockbridge (SU 388 345). Map: Winchester 185. **Target species:** Chalkhill Blue, Silver-spotted Skipper, Adonis Blue.

SATURDAY 16 AUG **ILEY POINT, KEYHAVEN MOTH EVENING**

Leader: Pete Durnell (01590) 674656. **Meet:** 9.30pm. Moth lamps will be run on the shingle bank overlooking the Solent. Park at Keyhaven Harbour (SZ 308 916) and then walk SE along the sea-wall until you see the lights on Iley Point at SZ 315 915. **Targets:** resident and possibly migrant species.

SUNDAY 17 AUGUST **NORMANDY MARSHES LYMINGTON**

Leader: Pete Durnell (01590) 674656. **Contact:** Alison Harper (01962) 882261. **Meet:** 10.30am at Normandy Farm (SZ 331 943) to look at results of overnight moth lamp, followed by walk. Morning only. Share cars. Take A337 south through Lymington to the

one-way system. Turn left on St. Thomas Street's then right at the church onto Church Lane. Continue on Broad Lane to All Saints Road. Dog leg across All Saints Road into Normandy Lane. The farm is on the left on a bend. Please contact Alison for a space at the limited parking at the farm or for directions to alternative parking. We are asked not to park in very narrow Normandy Lane. Map: Solent 196 or larger scale OL22.

Target species: Wall Brown.

SATURDAY 23 AUGUST **SHIPTON BELLINGER (Joint with local residents)**

Leader: Andy Barker (02380) 270042. **Meet:** 10.30am at Village Hall car park. Entering Shipton Bellinger from the south on A338, take the first turning on the left into the High Street soon after entering the village. Follow this road ½ a mile to T-jct with Bulford Road and turn left. Village Hall car park 100 yards on right as road bears to left (SU 229 457). Bring lunch. Map: Salisbury 184.

Target species: Brown Hairstreak.

SUNDAY 31 AUGUST **OLD WINCHESTER HILL**

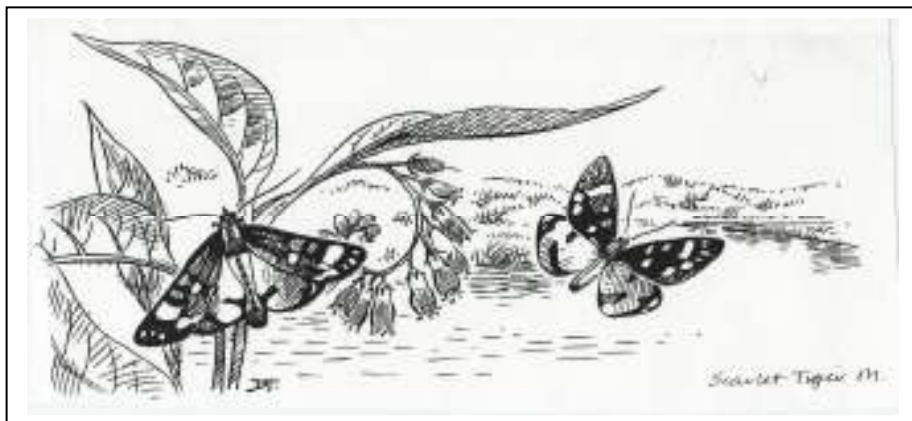
Leader: Alan McVittie (01962) 771022. **Meet:** 10.30am in Old Winchester Hill main car park (SU 645 214). Morning only. Map: Winchester 185.

Target species: Adonis Blue, Silver-spotted Skipper.

SUNDAY 7 SEPTEMBER **WINSPIT, PURBECK (Joint with Dorset Branch)**

Leader: Bernard Franklin, Dorset Branch (07711) 304412. **Meet:** 11.00am in Worth Matravers car park (SY 974 776). Leave Corfe on Swanage road and turn right on the B3069. In Kingston bear left by the Scott Arms and after one mile turn right to Worth. Car park on right as you enter village. A pleasant coastal walk for late butterflies and migrating birds. Wear stout footwear and bring lunch. Map: Bournemouth 195.

Target species: Clouded Yellow.



Scarlet Tiger by David Thelwell

APRIL 2008

Membership Secretary: Janet Jones, Ferney Hoolet, Pale Lane, Winchfield RG 27 8SW. Tel: (01252) 842174. email: janet@mauvedrop.com

Minutes Secretary: Thelma Smalley, 3 Carpenters, Alresford SO24 9HE.

Tel: (01962) 734 328.

Librarian: Brian Fletcher, 1 Abbots Ann Road, Harestock, Winchester SO22 6ND.

Tel: (01962) 882746

Publicity: Janet Jones, Ferny Hoolet, Pale Lane, Winchfield RG27 8SW.

Tel: (01252) 842174. e-mail: janet@mauvedrop.com

Leader SE Area Group: Andrew Brookes, 7 Nyewood Avenue, Portchester, Fareham PO16 8DR. Tel: (07780) 606556. e-mail: andrew.brookes@port.ac.uk

Reserves Officer and Health and Safety: Lynn Fomison, Mount Pleasant, Parkstone Road, Ropley SO24 0EW. Tel: (01962) 772251. e-mail: Lfomison@madasafish.com

Warden: Patrick Fleet, Ivy Cottage, Dummer, Basingstoke RG25 2AG.

Tel: (01256) 398471

Manager Yew Hill: Colin Matthews, The Risings, Old Palace Farm, Kings Somborne, Nr. Stockbridge SO20 6NJ. Tel: (01794) 388272

Adviser Bentley Station Meadow: Ken Willmott, 3 Yarm Court Road, Leatherhead KT22 8NY. Tel: (01372) 375773

Field Meetings Organiser,: Alison Harper, 6 North Drive, Littleton, Winchester SO22 6QA. Te: (01962) 882261. email: alison.harper@hotmail.co.uk

NEWSLETTER DEADLINE

Many thanks to all contributors for their articles. The deadline for the September 2008 Newsletter is 25 August.

Juliet Bloss, Editor

The opinions expressed in this Newsletter are not necessarily those of Hampshire and IoW Branch.



Chairman: Roger Buchanan, 23 Grosvenor Road, Chandlers Ford, SO53 5BU.
Tel: (023) 8025 2963. email: roger@roger-jane.co.uk

Vice-Chairman: Dave Green, The Cottage, West Blagdon, Cranborne,
Dorset BH21 5RY. e-mail: alpium@clara.co.uk

Branch Organiser: Jenny Mallett, Great Fontley Farm, Fareham, PO15 6EA.
Tel:(01329) 832177. e-mail: jenny-mallett@great-fontley.fsnet.co.uk

Treasurer: Tessa Newell, 4 Stoke Charity Road, Kings Worthy, Winchester SO23
7LS. Tel: (01962) 885296. e-mail: tessa.newell@btinternet.com

Secretary: Cressida Wheelright, Manor Farmhouse, Moundsmere, Basingstoke,
RG25 2HE. Tel: (01256) 389536. email: cressida.w@btopenworld.com.

Butterfly Recorder & Joint Report Editor (butterflies):
Linda Barker, 13 Ashdown Close, Chandlers Ford, Eastleigh SO53 5QF.
Tel: (023) 8027 0042. e-mail: lindabarker4@btinternet.com

Moth Officer & Joint Report Editor (moths): Tim Norriss, 40 Taskers Drive,
Anna Valley, Andover, Hants SP11 7SA. Tel: (01264) 354944.
Mob tel.: 0771 325 4901. email: tim@kitsmail.com

Chairman Conservation Subcommittee:
Andy Barker, 13 Ashdown Close, Chandlers Ford, Eastleigh SO53 5QF.
Tel: (023) 8027 0042. e-mail: aj3barker@btinternet.com

Chairman Records Subcommittee: Dave Green, The Cottage, West Blagdon,
Cranborne, Dorset BH21 5RY. e-mail: alpium@clara.co.uk

Chairman Information Subcommittee: Brian Fletcher, 1 Abbots Ann Road,
Harestock, Winchester SO22 6ND. Tel: (01962) 882746

Chairman Reserves Subcommittee: Jenny Mallett, Great Fontley Farm,
Fareham, PO15 6EA.
Tel: (01329) 832177. e-mail: jenny-mallett@great-fontley.fsnet.co.uk

Web site: www.hantsiow-butterflies.org.uk

Webmaster: Robin Turner, Bridles, Waggoners Way, Grayshott, Surrey GU26 6DX
Tel: (01428) 605831. e-mail: webmaster@hantsiow-butterflies.org.uk

Newsletter Editor: Juliet Bloss, 7 Forest Meadow, Hythe, Southampton SO45 3RH.
Tel: (023) 8084 8085. e-mail: sevenmeads@aol.com